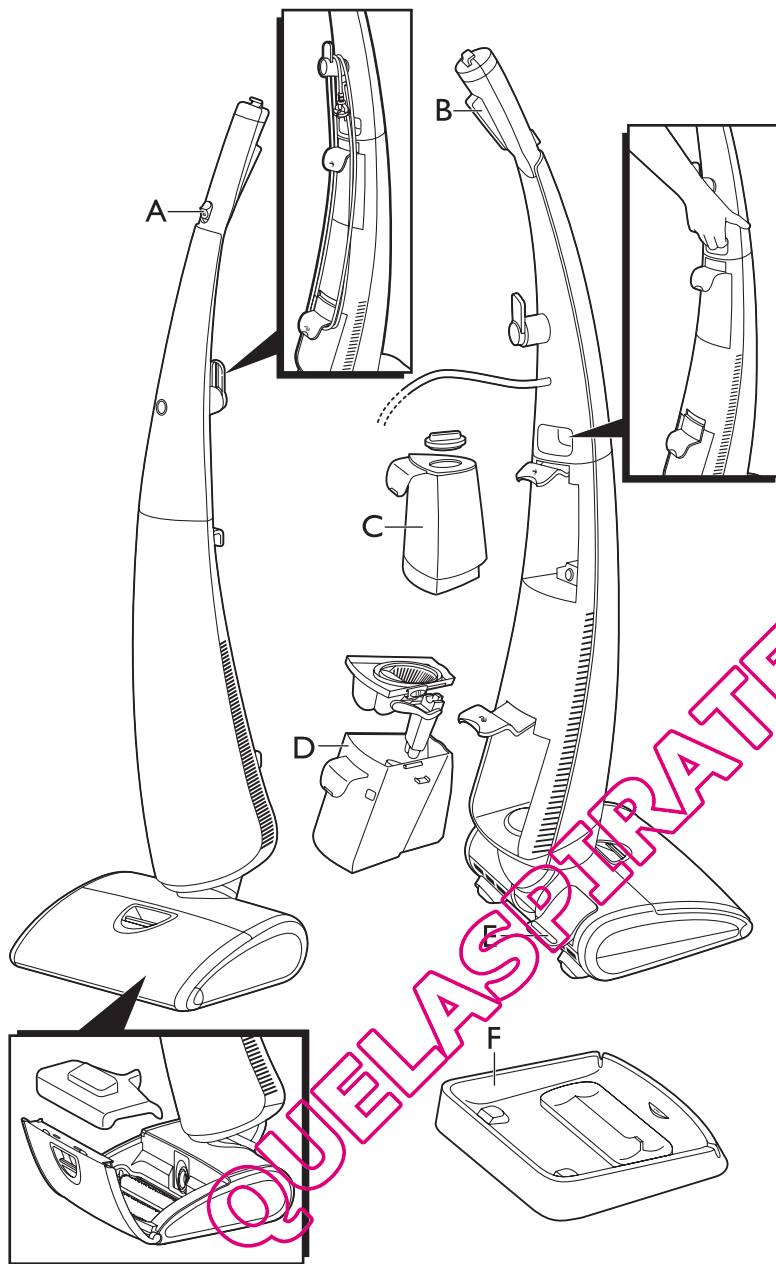


AquaTrio

FC7070

Quick start guide, Schnellstartanleitung, Guide de démarrage rapide
Guida di avvio rapido, Snelstartgids



A
Unlock slide
Entriegelungsschalter
Bouton de déverrouillage
Pulsante di sblocco a scorrimento
Ontgrendelknop

B
Power-on button
Ein-/Ausschalter
Bouton de mise sous tension
Pulsante di accensione
Aan/uitknop

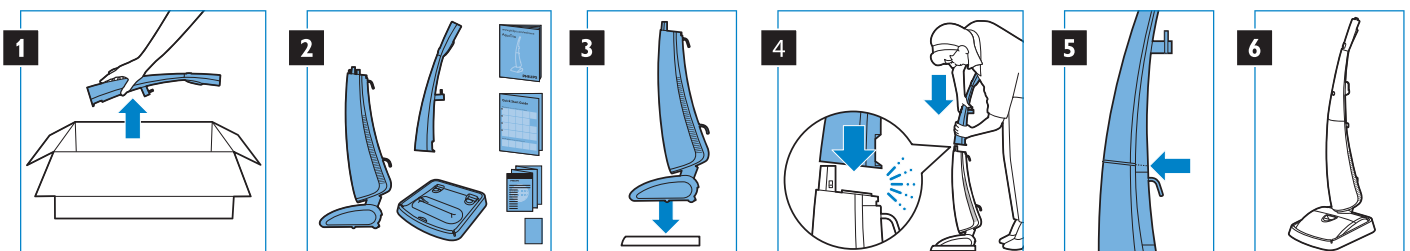
C
Clean water tank
Frischwasserbehälter
Réservoir d'eau propre
Serbatoio dell'acqua pulita
Schoonwaterreservoir

D
Dirty water tank
Schmutzwasserbehälter
Réservoir d'eau sale
Serbatoio dell'acqua sporca
Vuilwaterreservoir

E
Parking position release button
Parkposition-Entriegelungstaste
Bouton de déverrouillage de position
de rangement
Pulsante di sgancio per la posizione di riposo
Parkeerstandontgrendelknop

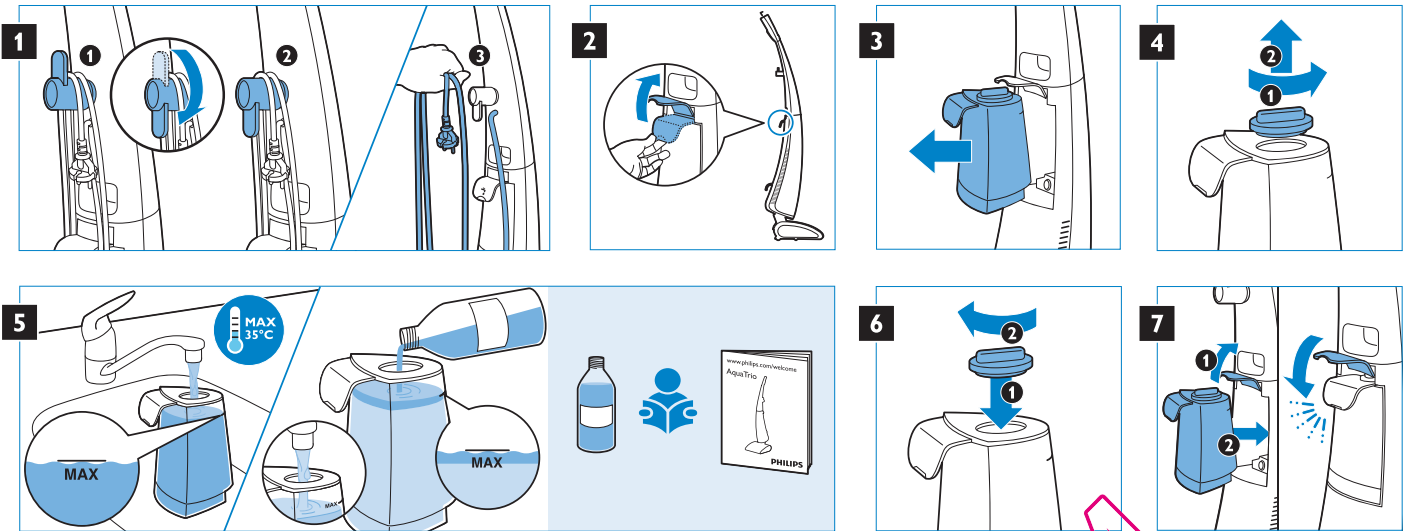
F
Flushing tray
Spülfach
Bac de rinçage
Vassoio di scarico
Spoelplateau

Before first use, Vor dem ersten Gebrauch, Avant la première utilisation, Primo utilizzo,
Voor het eerste gebruik

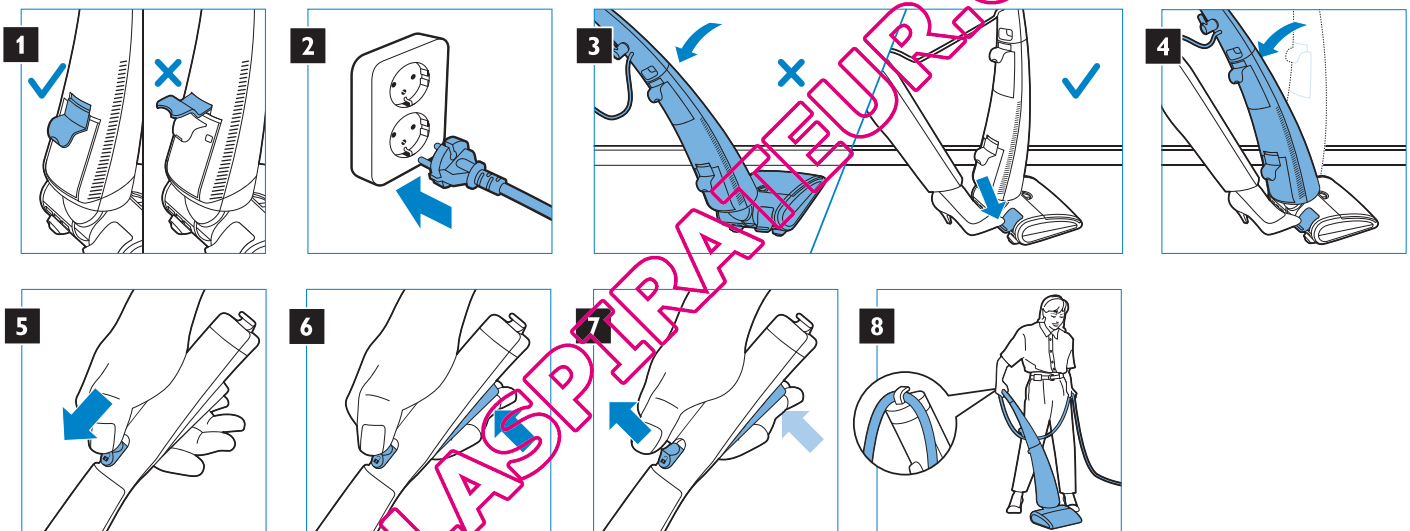


PHILIPS

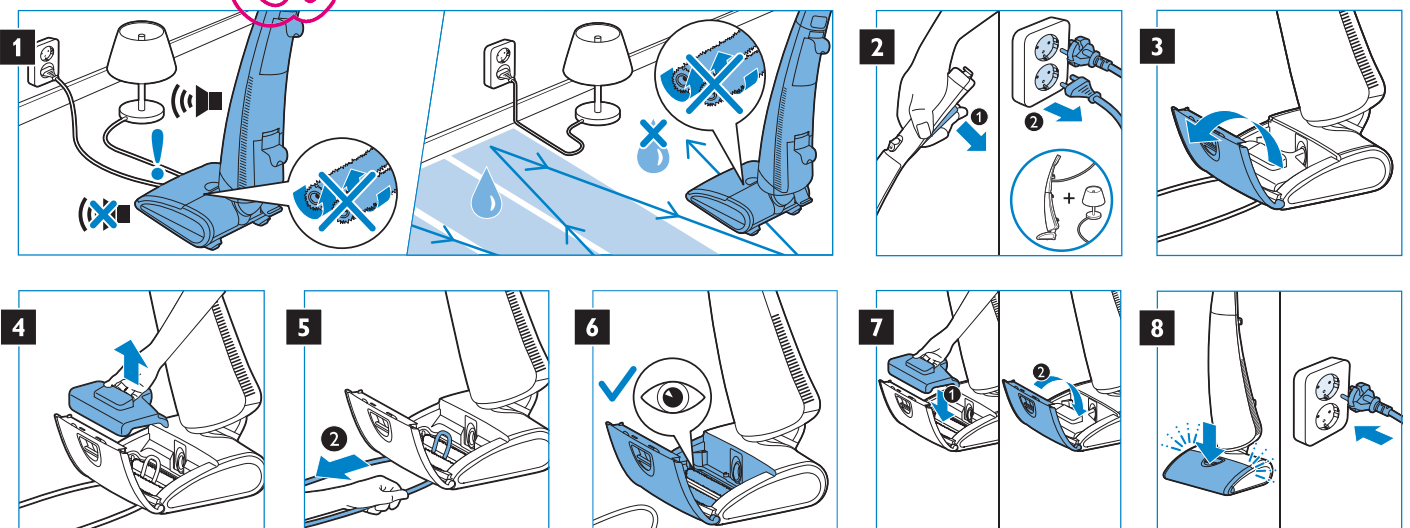
Preparing for use, Für den Gebrauch vorbereiten, Avant l'utilisation, Predisposizione dell'apparecchio, Klaarmaken voor gebruik



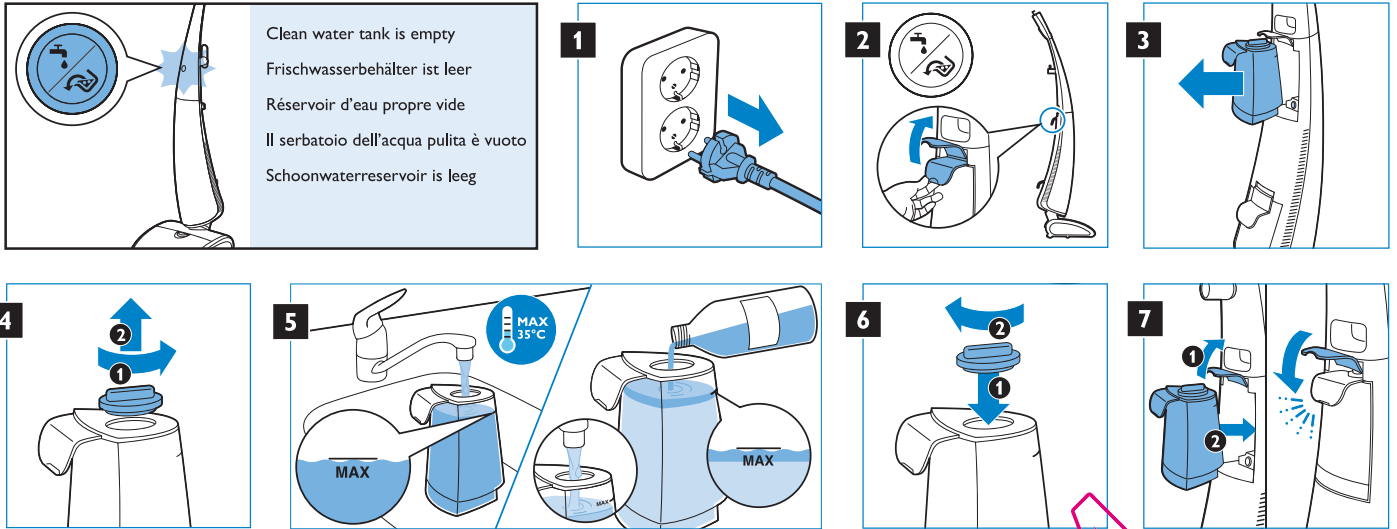
Using the appliance, Das Gerät benutzen, Utilisation de l'appareil, Modalità d'uso dell'apparecchio, Het apparaat gebruiken



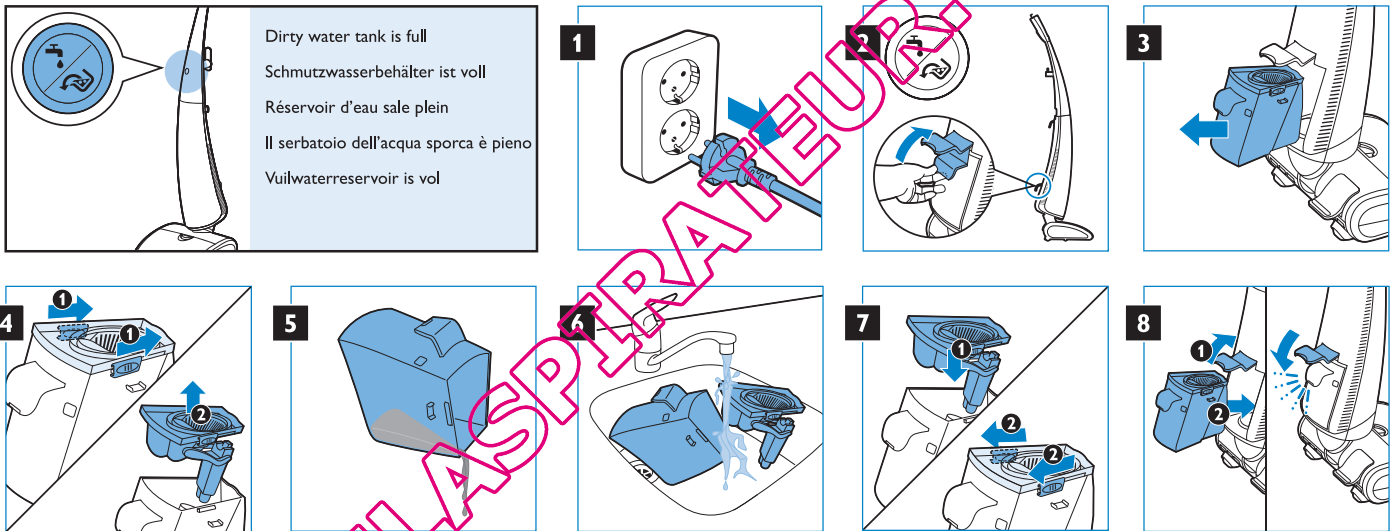
Active protection system, Aktives Schutzsystem, Système de protection actif, Sistema di protezione attiva, Actief beschermingssysteem



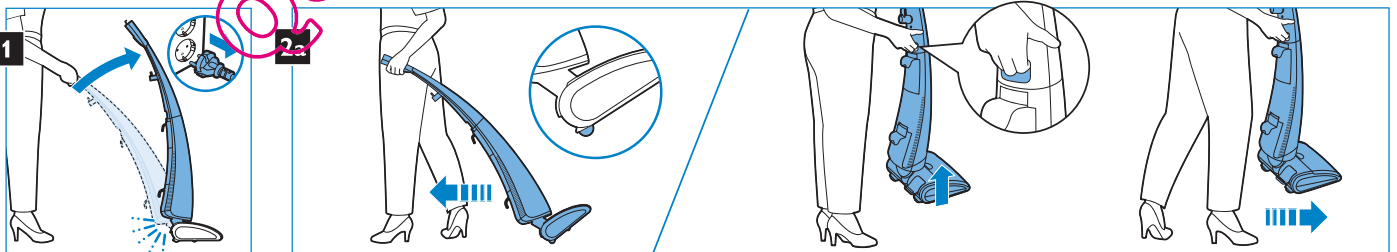
Filling the clean water tank, Frischwasserbehälter füllen, Remplissage du réservoir d'eau propre, Riempimento del serbatoio dell'acqua pulita, Het schoonwaterreservoir vullen



Emptying the dirty water tank, Schmutzwasserbehälter leeren, Vidage du réservoir d'eau sale, Svotamento del serbatoio dell'acqua sporca, Het vuilwaterreservoir legen

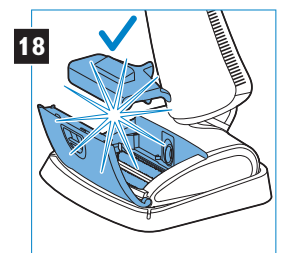
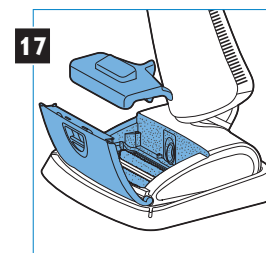
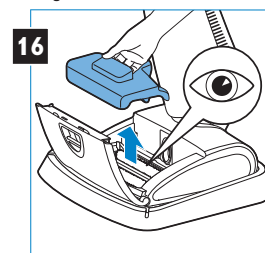
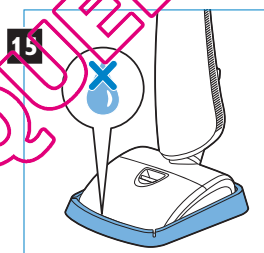
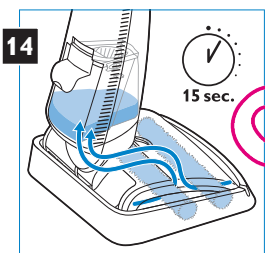
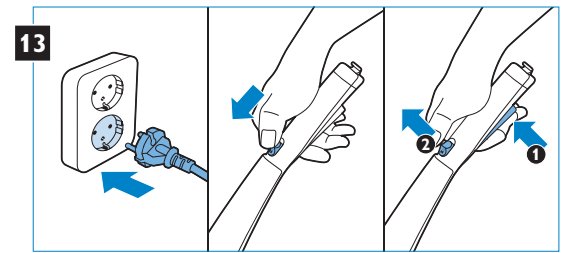
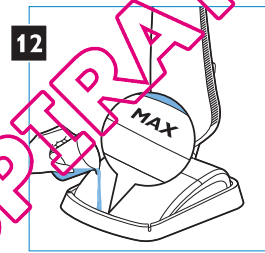
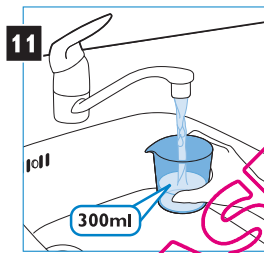
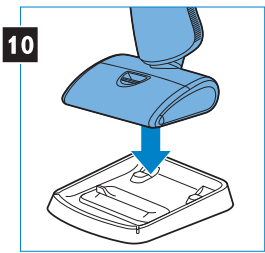
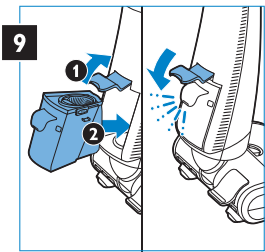
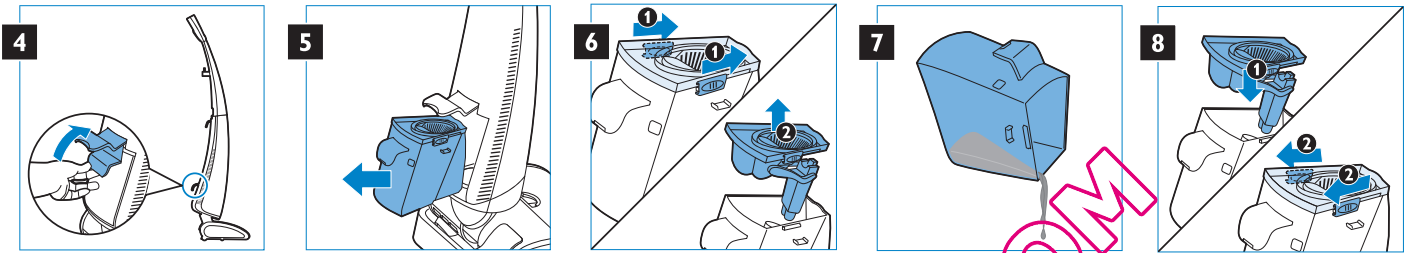
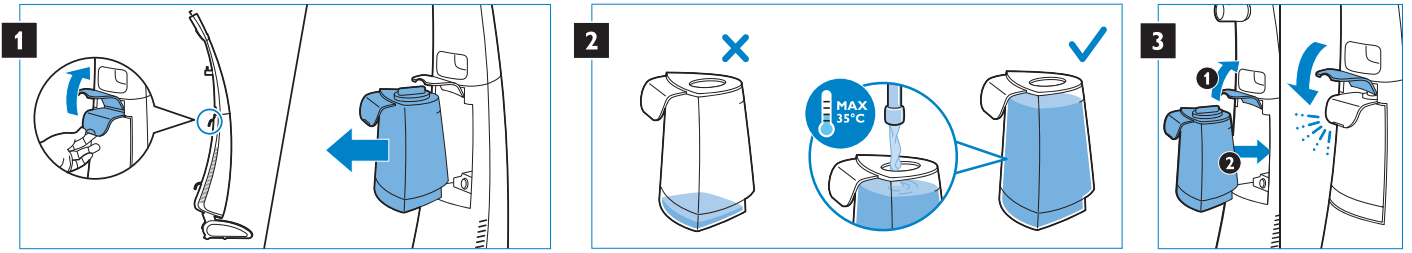


Moving, Bewegen, Déplacement, Spostamento, Bewegen



Cleaning the appliance, Das Gerät reinigen, Nettoyage de l'appareil, Pulizia dell'apparecchio, Het apparaat schoonmaken

Flushing the appliance, Das Gerät durchspülen, Rinçage de l'appareil, Come lavare l'apparecchio, Het apparaat doorspelen



Fill slowly
Langsam füllen
Remplir lentement
Riempite lentamente
Langzaam vullen

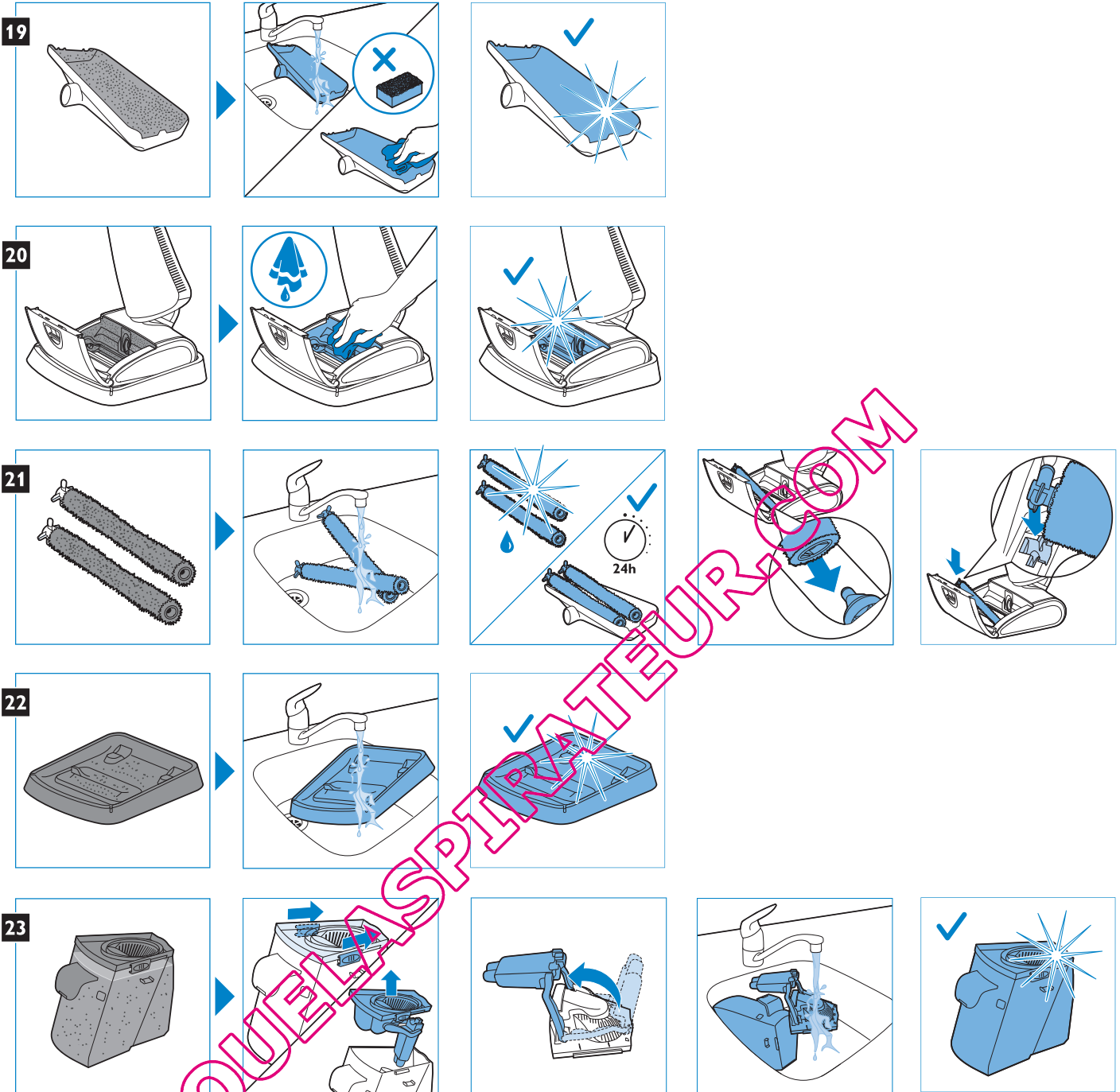
Check the inside of the nozzle
Prüfen Sie die Innenseite der Düse
Vérifier l'intérieur de l'embout
Controllate la parte interna della bocchetta
Controleer binnenkant van zuigmond

Is it clean? If no, go to step 19
Ist sie sauber? Wenn nicht, fahren Sie mit Schritt 19 fort.
Est-il propre? Si ce n'est pas le cas, aller à l'étape 19
È pulita? Se non lo è andate al passaggio 19
Schoon? Zo nee, ga naar stap 19

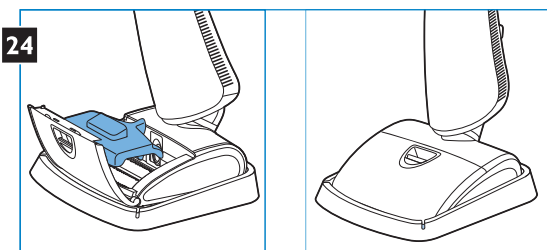
Is it clean? If yes, go to step 24
Ist sie sauber? Wenn ja, fahren Sie mit Schritt 24 fort.
Est-il propre? Si c'est le cas, aller à l'étape 24
È pulita? Se lo è andate al passaggio 24
Schoon? Zo ja, ga naar stap 24

QUEL'ASPIRATEUR.COM

Cleaning of other parts, Andere Teile reinigen, Nettoyage d'autres pièces, Pulizia delle altre parti, Andere delen schoonmaken




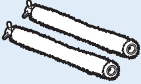


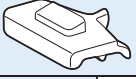
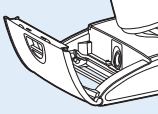
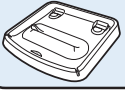


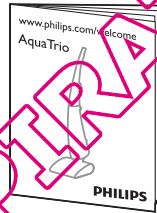
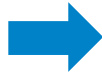
Storage, Aufbewahrung, Rangement, Conservazione, Opbergen



Still wet inside
 Innen noch nass
 Encore mouillé à l'intérieur
 Interno ancora bagnato
 Binnenzijde nog vochtig

Dry inside
 Innen trocken
 Sécher l'intérieurs
 Interno asciutto
 Binnenzijde droog

			
	✓		
			✓
	✓	✓	
	✓	✓	
			✓
	✓	✓	✓



www.philips.com/support

