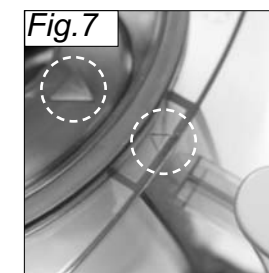
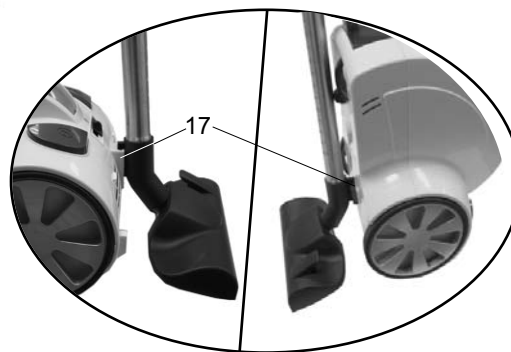
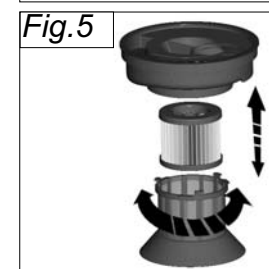
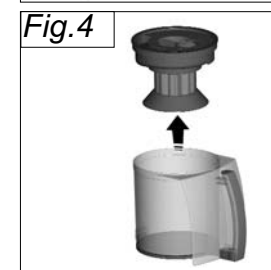
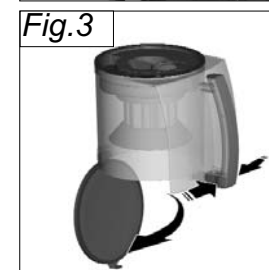
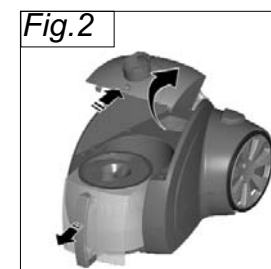
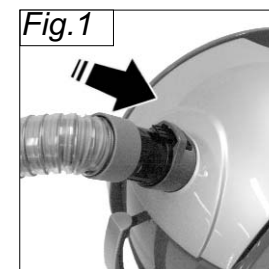
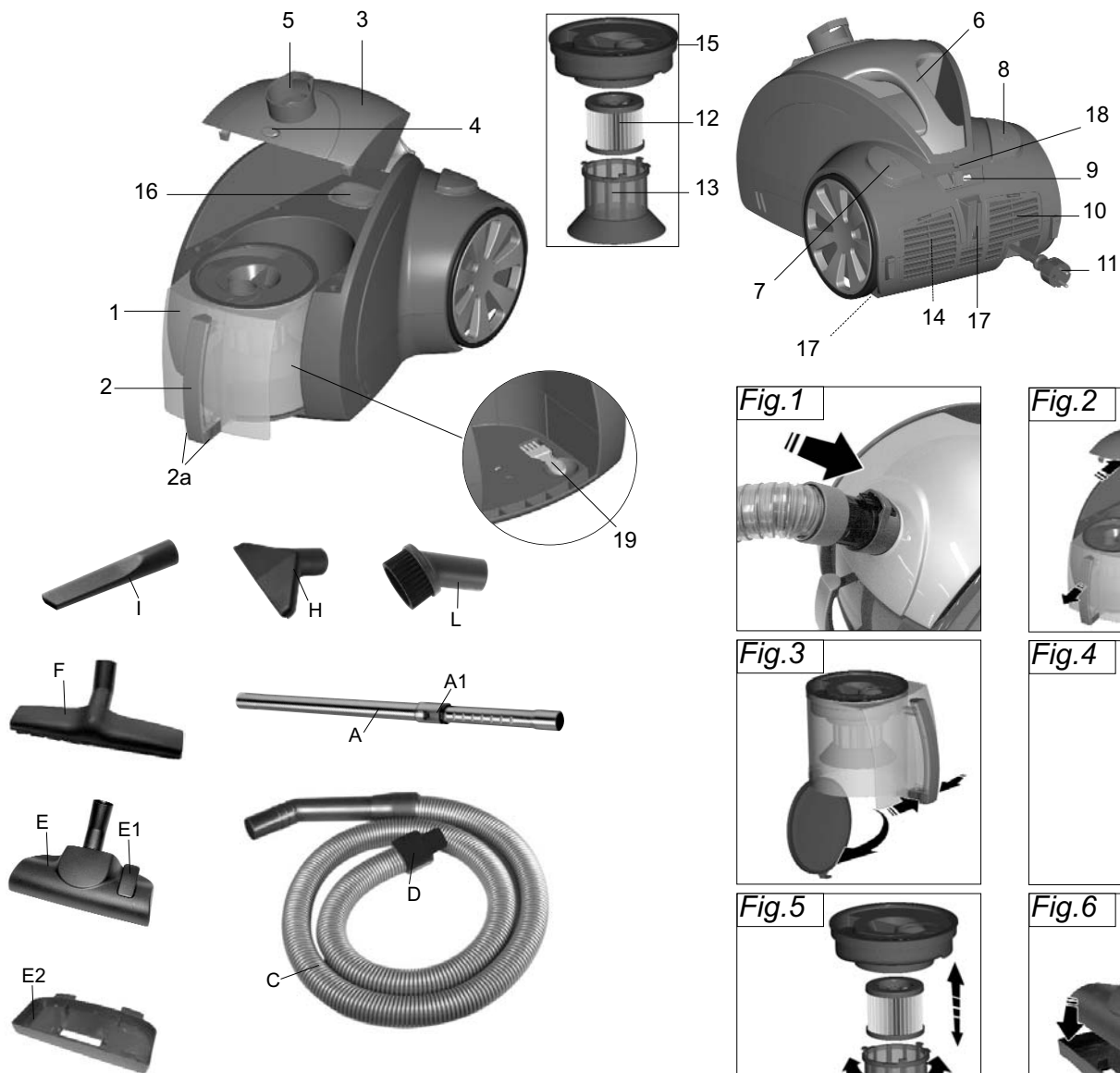
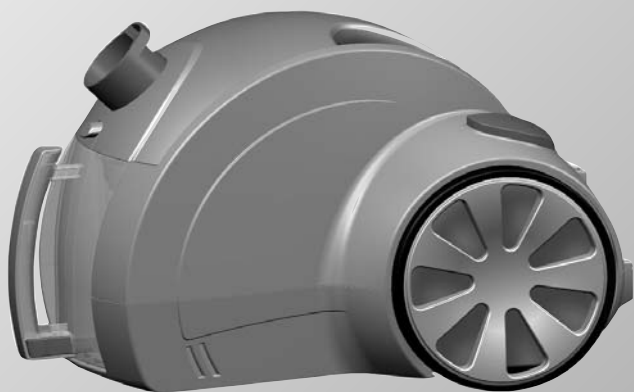


AS 530

AS 540



ITALIAN
DESIGN

CE

 **Politi**[®]


KEY

- 1) Dust collection container
- 2) Dust container handle
- 2a) Dust collection container emptying buttons
- 3) Dust container top lid
- 4) Top lid opening button
- 5) Hose connector
- 6) Carry handle
- 7) ON/OFF switch
- 8) Cable winder button
- 9) Suction power slide control
- 10) Rear filter grille
- 11) Power cable
- 12) Hepa-type filter
- 13) Filter body with ultra-fine mesh
- 14) Active carbon filter
- 15) Filter assembly
- 16) Air inlet PPI filter
- 17) Accessories holder
- 18) Safety device indicator light
- 19) Filter cleaning brush

ACCESSORIES

- A) Telescopic tube
- A1) Telescopic tube locking
- C) Hose
- D) Suction opening
- E) Universal Brush
- E1) Brush selector
- E2) Parquet accessory (Mod.AS530)
 - F) Parquet brush (Mod.AS540)
 - H) Multipurpose nozzle
 - I) Lance for cleaning corners
 - L) Soft brush

POLTI S.p.A., in accordance with its policy of continuous improvement, reserves the right to make any technical and structural modifications without prior notice.

 This unit conforms to EC-directives 89/336 as amended by 93/68 (EMC) and 73/23 as amended by 93/68 (low voltage).

WARNINGS

KEEP THESE INSTRUCTIONS

- Read these instructions for use carefully before using the appliance.
- Any use which does not comply with these instructions will invalidate the warranty.
- The wiring system to which the appliance is connected must always comply with the laws in force.
- Before connecting the appliance, make sure that the mains voltage is the same as the voltage indicated on the data label of the appliance and that the power outlet is connected to earth.
- Always turn off the appliance at the on/off switch before unplugging it.

- If the appliance is left unused, always disconnect it from the mains. Never leave the appliance unattended with the cable plugged into the mains.
- Always make sure the appliance is unplugged before performing maintenance work of any kind
- Do not pull the power cable out of the socket, but grasp the plug itself to avoid damage to the socket.
- Do not allow the power cable to be twisted, crushed, stretched, or come into contact with sharp or hot surfaces.
- Do not use the appliance if the power cable or other important parts are damaged.
- Do not use electric extension leads that are not authorized by the manufacturer, as they may cause damage or fire.
- If it is necessary to replace the power supply cable, please refer to the nearest Polti authorised service centre, since the use of a special tool is necessary.
- Never touch the appliance with wet hands or feet with the cable plugged into the mains.
- Do not use the appliance when barefoot.
- Do not use the appliance near a bathtub, shower or container full of water
- Never immerse the appliance, the cable or the plugs in water or another liquid.
- Use of the appliance in places where there is a danger of explosions is prohibited.
- Do not use the product with toxic substances.
- Do not lay the hot appliance on surfaces sensitive to heat.
- Do not leave the appliance exposed to wind or rain.
- Do not place the appliance near a live element, an electric stove or any other source of heat.
- Do not expose the appliance to extreme temperatures
- Never let children or people who are not familiar with how the appliance works use it.
- Do not press the buttons hard or with a pointed object such as a pen.
- Always rest the appliance on a stable surface.
- In case of accidental fall of the appliance it is necessary to have it checked by an authorized Service Centre as the internal safety features may have been affected.
- In case of breakdown or malfunction switch off the appliance and never attempt to disassemble it, but refer to an authorized Service Centre.
- In order to avoid prejudicing the safety of the appliance, use only original spare parts and accessories approved by the manufacturer.
- Do not wind the power cable around the appliance, especially when the appliance is still hot.
- Do not suck up liquids
- Do not use the appliance to suck up acids or solvents, as these might cause serious damage to the appliance and above all do not suck up explosive dust or liquids, as these could cause explosions on coming into contact with the inside components of the appliance.
- Do not suck up toxic substances.
- Do not suck up burning or incandescent objects such as embers, ash or other material in which combustion is taking place.

CORRECT USE OF THE PRODUCT

This appliance is intended for home use for sucking solids as described and in accordance with the instructions provided in this manual. Please read these instructions carefully and keep them, as you may find them useful in future.

Politi declines liability for any damage or accident derived from any use of this appliance which does not comply with the instructions contained in this booklet.

ATTENTION

Directive 2002/96/EC (Waste Electrical and Electronic Equipment - WEEE): information for users

This product complies with EU Directive 2002/96/EC.



The crossed-out wastebasket symbol on the appliance means that at the end of its useful lifespan, the product must be disposed of separately from ordinary household wastes.

The user is responsible for delivering the appliance to an appropriate collection facility at the end of its useful lifespan.

Appropriate separate collection to permit recycling, treatment and environmentally compatible disposal helps prevent negative impact on the environment and human health and promotes recycling of the materials making up the product. For more information on available collection facilities, contact your local waste collection service or the shop where you bought this appliance.

FUNCTIONING

- Insert the hose suction opening (D) into the hose connector (5) (fig.1).
- Unroll the power cable (11) by pulling it till reaching the yellow sign on the cable itself. DO NOT under any circumstances unroll beyond the red sign.
- Connect the plug to the mains.
- Press the ON/OFF switch (7). The appliance will start operating. The ON/OFF switch (7) can also be operated by touching it with your foot, so you do not have to bend.
- It is possible to regulate the suction power through the slide control (9). Moving it to the right, the suction power increases, while moving to the left, the suction power decreases. We recommend **minimum** power for curtains, **medium/low** power for sofas, armchairs and cushions, **medium/high** for carpets and high for floors and **hard** surfaces (ceramics, marble, etc.).
- To end suctioning, press again the ON/OFF switch (7).

EMPTYING AND CLEANING THE DUST COLLECTION CONTAINER

- Switch off the cleaner by pressing the ON/OFF switch (7). Unplug the power cable (11) from the mains electricity supply.
- Remove the hose from the appliance, by pressing the release button on the opening (D) while pulling it outwards.
- Press the top lid opening button (4) and lift the lid (3) (fig.2).
- Lift out the dust collection container (1) using the handle (2) (fig.2).
- Press the buttons (2a) at the base of the handle (2) so that the container opens and the dust collected inside it drops out (Fig.3).
- **WARNING:** since pressing the button (2a) will cause the bottom of

the container to open, we recommend doing this job over a waste bin.

- Take out the filter unit (15) and remove any residual of dirt (fig.4).
- Turn the ultra-fine mesh filter (13) anticlockwise and remove it from the unit (fig.5)
- Remove the HEPA filter (12) from the ultra-fine mesh filter (13).
- Clean filters (12) and (13) using the brush (19) supplied.
- We recommend that you clean the filters every time you finish using the cleaner.
- **WARNING:** do not use the cleaner unless the dust collection container (1) complete with the filter is fitted.
- Place the dust collection container back in the cleaner by following the above instructions in reverse order.

USING THE ACCESSORIES

Accessories can be attached directly to the flexible hose or to the telescopic tube (A).

Using the telescopic tube (A)

The tube is about 60 cm long when closed, about 1 m when extended to its greatest length. To increase or decrease length, press the locking (A1) and extend or reduce length as desired.

Using the universal brush (E)

Connect the brush to the telescopic tube. If you move the selector on the brush (E1) and press with a foot, you can change the bristles position without bending down. The position with bristles extended is recommended for all non-carpeted floors. The position without bristles is recommended for carpets.

Using the parquet accessory (E2) (model AS530)

A special parquet accessory (E2) can be attached to the universal brush. Insert the brush (E) (with the bristles raised) inside the accessory to connect it (fig.6).

Parquet brush (F) (mod.AS540)

The parquet brush is designed to clean delicate surfaces and therefore has bristles and wheels in material specially selected to avoid damaging such surfaces.

Multipurpose nozzle (H)

The multipurpose nozzle is recommended for cleaning upholstery surfaces such as the joints of sofas, armchairs, mattresses, car upholstery, etc.

Lance for cleaning corners (I)

The lance (I) is recommended for thorough vacuum cleaning of hard-to-reach spots such as skirting boards and folds in sofas, armchairs, upholstered furniture and car upholstery.

Soft brush (L)

The soft brush has soft bristles for dusting delicate surfaces such as picture frames, books, etc.

AUTOMATIC CABLE WINDER

Before putting your vacuum cleaner away, rewind the power cable by pressing the button (8), being careful to accompany the cable during winding.

GENERAL MAINTENANCE

Always make sure the appliance is unplugged before performing maintenance work of any kind.

FILTERING SYSTEM

This cleaner has a 5-stage filtering system. The first stage is the dust collection container where a cyclone effect traps the dirt at the bottom. The second stage is the ultra-fine mesh filter which has a HEPA type filter (third filtering stage) inside it. The fourth and fifth filtering stages are respectively the PPI filter and the active carbon filter.

Replacement and cleaning of the HEPA-type filter (12) and of the ultra-fine mesh filter (13)

We recommend cleaning these filters after each use, with the brush supplied (19). If they are particularly dirty, however, they can be washed as follows:

- Remove the HEPA-type filter (12) and the ultra-fine mesh filter (13) as instructed in the paragraph on "emptying and cleaning the dust collection container".
- Rinse both filters with running water and leave them to dry.
- Put the filters back together by following the instructions for their removal in reverse order.

ATTENTION: make the arrow on the filter assembly (15) coincide with the arrow on the dust collection container (1) (Fig.7).

If the filters are torn they must be replaced only with Polti original spare parts.

Replacement and cleaning of the air inlet PPI filter (16)

- Press the container lid opening button (4) and lift the lid (3) (fig.2).
- Remove the air inlet PPI filter (16) from its holder.
- Rinse it with running water and leave it to dry. If the filter is irreparably damaged, replace it with a Polti original spare part.

WARNING:

- Allow the filters to dry naturally, away from light and heat sources. It is advisable to wait 24 hours before putting the filters back in the cleaner.
- Do not use detergent, do not scrub the filters and do not wash them in a dishwasher.

Replacement of the active carbon filter (14)

If the filter is torn, replace it with a Polti original spare part.

- Open the rear HEPA filter grille (10) by pressing the levers on the grille itself.
- Remove the filter and put in a new one by following the instructions given above in reverse order.

N.B.: the active carbon filter MUST NOT be washed.

IF THE SAFETY DEVICE IS TRIGGERED

The safety device may be triggered while you are using the cleaner if excessive quantities of dust and dirt are picked up and the filters (12) and (13) inside the container get clogged with dirt. This could cause your cleaner to overheat and thus damage it. To solve this potential problem, the cleaner has been fitted with a safety device. This is triggered when the filters are clogged with excessive dirt. The cleaner will therefore automatically switch off and the safety device indicator light (18) will begin flashing. Proceed as follows to restart the cleaner:

- Switch off the cleaner using the ON/OFF button (7) and unplug the power cable from the mains electricity supply.
- Clean the container and the filters as described in the paragraph on "EMPTYING AND CLEANING THE DUST COLLECTION CONTAINER".
- The cleaner can now be used normally once again.

ELECTRICAL SAFETY

No earth required.

Ensure the mains voltage suits your appliance.

Fitting the mains plug important

The wires in the mains lead are coloured in accordance with the following code:

- Blue: Neutral
- Brown: Live

The wire which is coloured BLUE must be connected to the Terminal which is marked with the letter "N" or coloured BLACK.

The wire which is coloured BROWN must be connected to the Terminal which is marked with the letter "L" or coloured RED.

It is important that the outer sheath is clamped correctly into the 3-pin plug.

If in doubt consult your local Service Dealer or qualified electrician before the machine is used.

A 13 AMP FUSE MUST BE FITTED TO THE MAINSPUG.

